

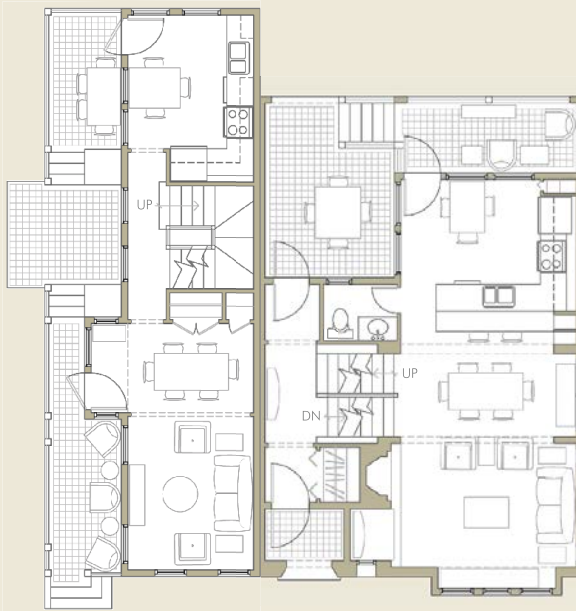
5B. COURT TOWNHOUSE

10'x44' / 25'x23'



BROAD HIP ELL

2 STORY



MAIN LEVEL
485 SF

MAIN LEVEL
675 SF



UPPER LEVEL
460 SF

UPPER LEVEL
585 SF

3 BEDROOMS; 1 1/2 BATHS

1,260 SF