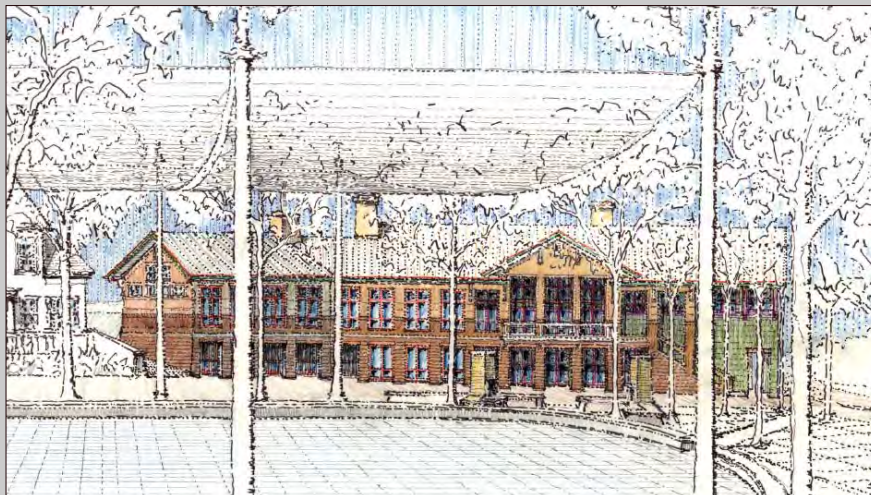




East Elevation



View to West across Plaza/Skating Rink

DESIGNED 2004

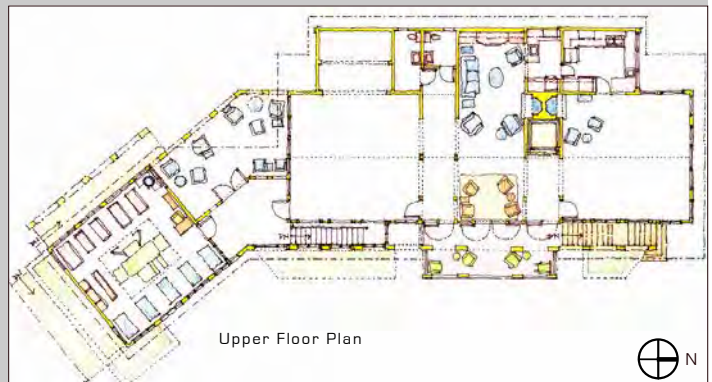
The second building of the Village Center frames the west side of the central plaza (and skating rink in winter) as a complement to the General Store on the east side. As the primary community structure for social amenities, the center is comprised of 7,500 sf with a number of moderate sized rooms designed for multiple uses.

The upper and lower floors mediate two levels of public space on the east and west flanks: a community pool to the southwest and the main court of the village to the east. The clarity and prominence of stairways express the residents' movement between the two spaces.

PROGRAM

DAE / Westbrook LLC

- Community Halls: 3,200 sf
- Fitness Rooms: 1,100 sf
- Locker Rooms: 1,300 sf
- Library & Game Room: 850 sf
- Kitchen & Service: 400 sf
- Porches / Decks: 700 sf



Upper Floor Plan

