

Context Map

1 mile

1/2 mile

Neighborhood Diagram

CONCEPT MASTER PLAN

The first stage of planning a 3,000 acre community west of Hurricane, Utah has focused on integrating a major beltway thoroughfare with the five centers of the new town: making the Multi-way Transit Boulevard act as the primary public space of each village center, and act as the basis of economic energy for the town.

The scale and configuration of mixed-use neighborhoods and single-use districts are established by the alignment, and intersection spacing, of the proposed 'Southern Parkway'. The network of secondary and tertiary streets consequently follows. The Multi-way Boulevard moves through a sequence of Transect (T-Zone) conditions, with modifications to its design, as demonstrated on the thoroughfare sections (to the right).

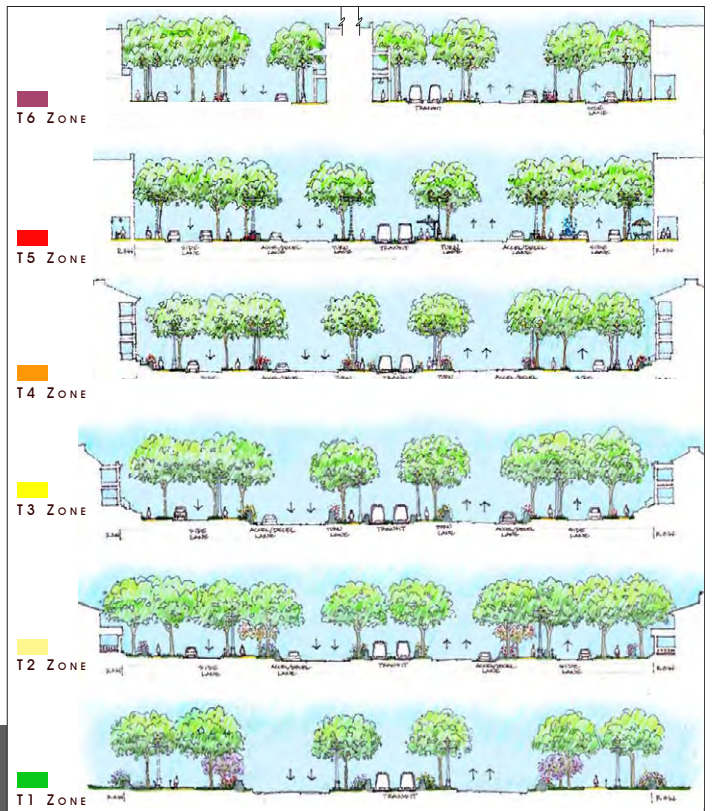
PROGRAM

Private Ownership

- 8 Neighborhoods (Mixed Use)
14,000 DU Residential
1,700,000 SF Non-Residential
- 1 Town Center
800 DU Residential
900,000 SF Non-Residential
- 4 Districts (Single-Use)
1,100,000 SF Non-Residential

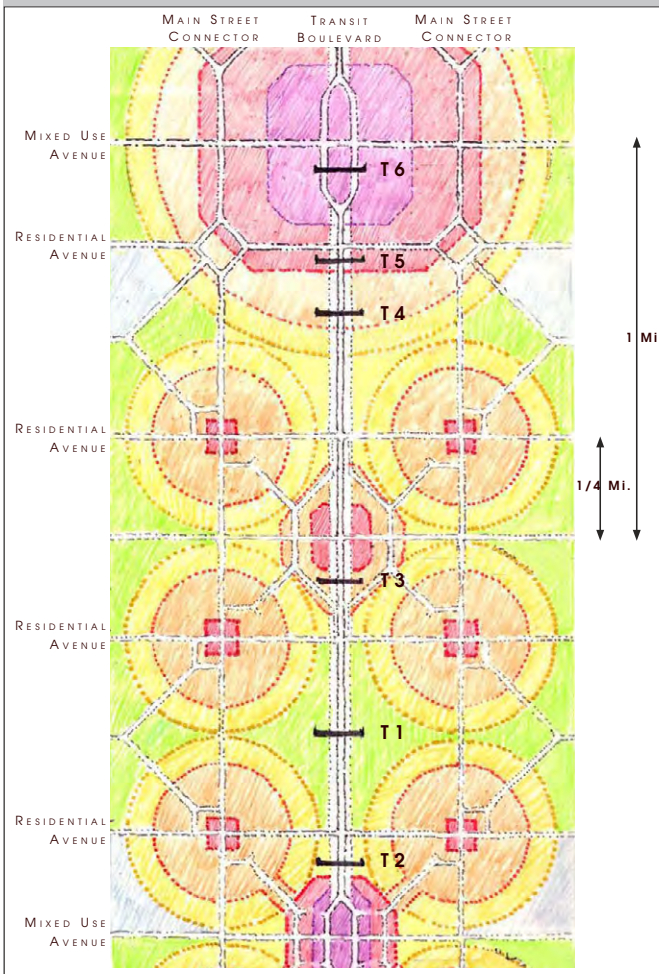
TOWN & CORRIDOR

Greenfield Setting - Rural Context
2,964 Acre Site

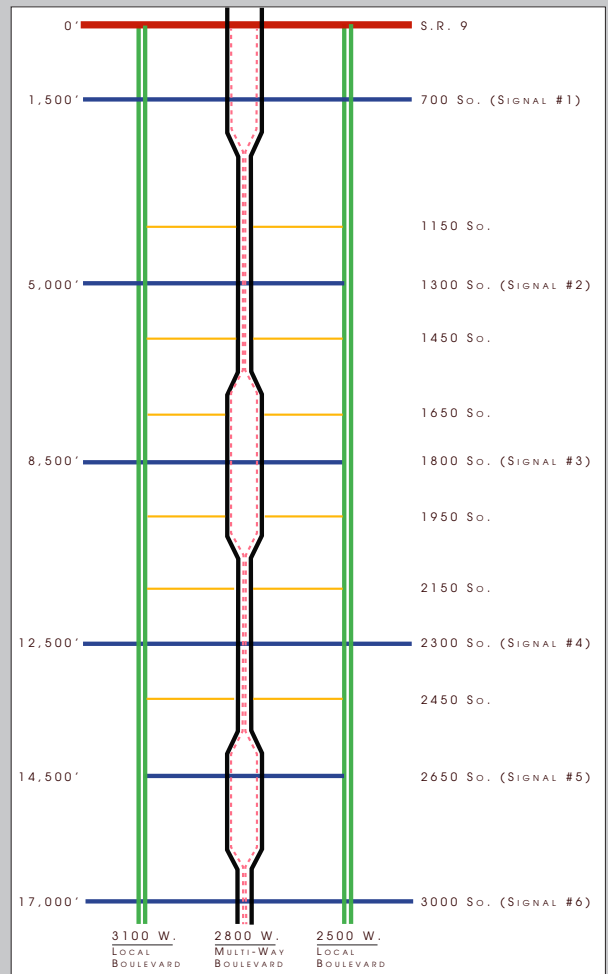


Multi-way Transit Boulevard Sections

HURRICANE NEW TOWN



Neighborhood & Transect Diagram

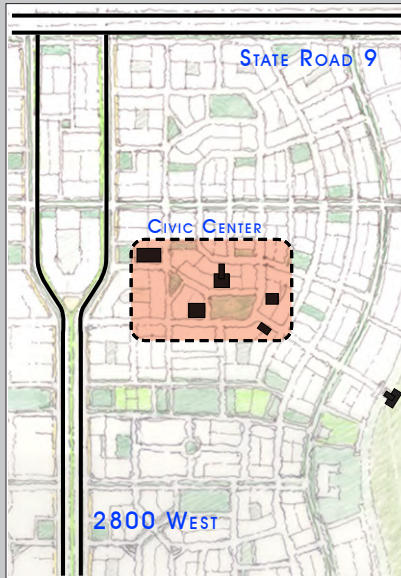


Thoroughfare Structure

NEIGHBORHOOD STRUCTURE



Representative Neighborhood

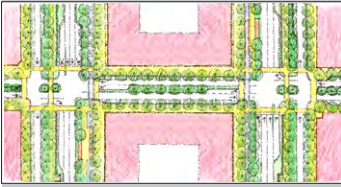


Civic Center Location

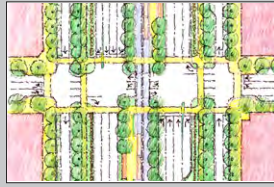


Typical Platting

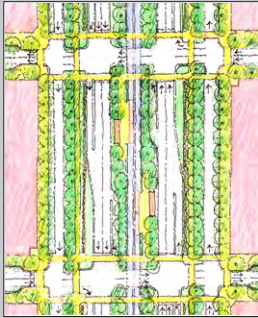
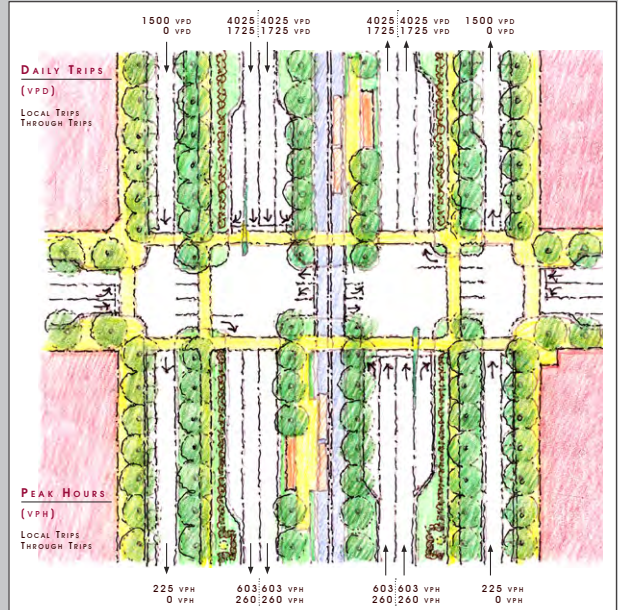
HURRICANE NEW TOWN



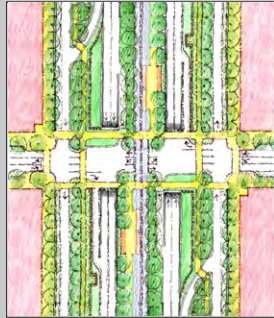
Signal 1



Signal 2



Signal 3



Signal 4

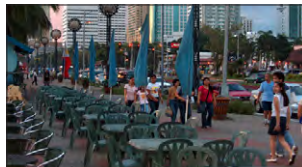
BOULEVARD ZONES

Boulevard design integrates several transit, vehicle, and pedestrian zones - incorporating the numerous physical elements of each - and creates a variety of intersection conditions.

Coordination of the complex balance for boulevard activities requires that a range of disciplines is brought together for good urbanism. Examples provided here are typical of each major movement condition.



Overall View



Building Frontage



Side Lane



Pedestrian Median



Through Lanes



Center Median

