

South East View Elevation

DESIGN 2011

A small hotel and restaurant was designed as the central amenity for a new riverside neighborhood that has been joined to the downtown district of Buena Vista.

The restaurant is comprised of two levels, both oriented to the kayaking course created on the Arkansas River. A modest stone amphitheater connects to the hotel and is located at the finish line of the course.

The hotel's disposition on the village town square contiguous, is with a modulated, continuous facade that is more regular and quiet - as are its neighboring buildings defining the square.

Twenty four small suites, configured to create larger suites when combined and "locked off", are complemented by hotel amenities of store, spa, and conference rooms.



Riverside View of Elevation

PROGRAM

Vacation Lodging & Amenities

- 18,700 sf
- 24 suites
- Small retail
- Porches overlooking river
- Two restaurants
- Conference rooms
- Spa services

COMMERCIAL & RECREATION
Neighborhood Setting - Greenfield Context
 0.25 Acre Site



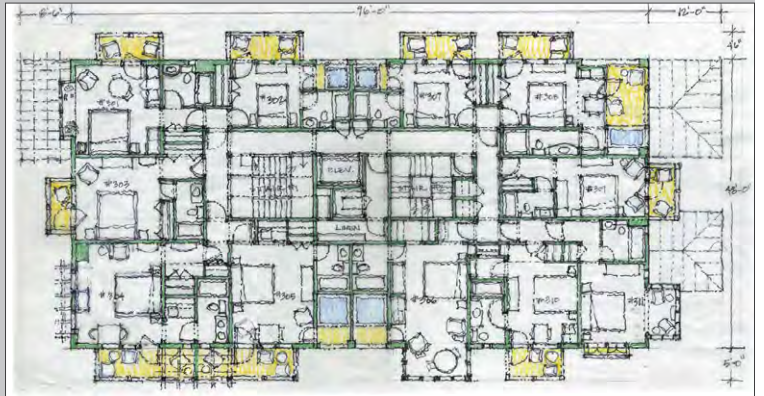
West View Elevation

RIVERSIDE INN

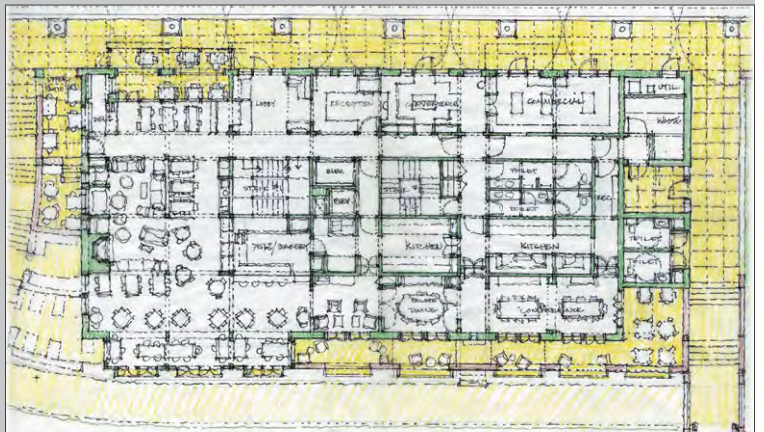


Street View Elevation

The second phase of building for this cottage, creating a separate suite of rooms for the extended family, completes an enclosure around a raised earth platform (required by Massachusetts Health Code regulations for drainfields near the high tide line). The lower volume reflects the New England lineage of "lean-to's and add-ons", which are clearly secondary to the main building form. The garage shall be located behind the stucco walls of the earth platform, underneath the one story bedroom wing.



Upper Floor Plan



Main Floor Plan