



Courtyard View: South Building

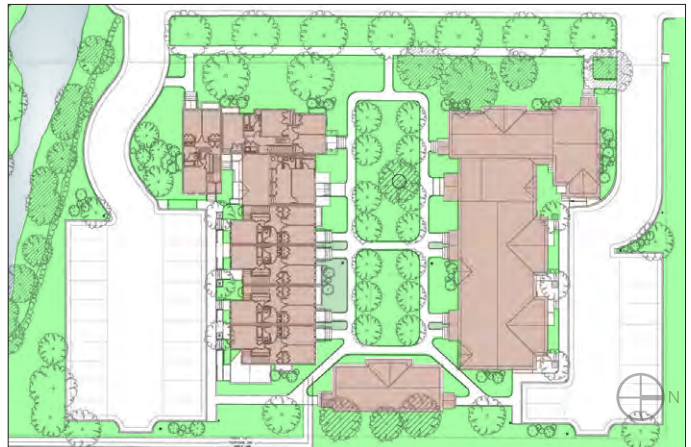
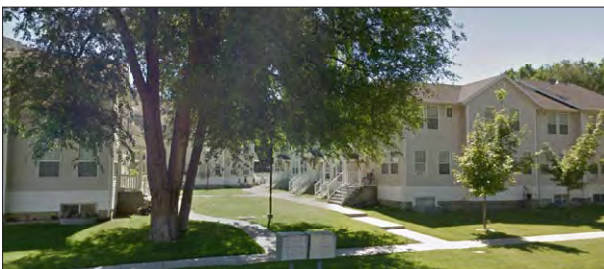


Street View: North and South Buildings

Courtyard and Street Elevations - 15 Units

COMPLETED 2003

On an infill parcel four blocks from the town center, fifteen townhouses have been grouped around a small green. Three unit types to make three buildings, fronting the street, forming the greencourt at the center. The modest scale is suitable to the single family neighborhood. The formality of the arrangement organizes a fairly high density onto a small site.



Scale: 1" = 80'

Site Plan

PROGRAM

Habitat for Humanity

- Two Bedroom Units (2)
- Three Bedroom Units (11)
- Four Bedroom Units (2)
- Surface Parking to Rear of Buildings

South Building

South Elevation (to Parking)



HOUSES & HOUSING

Greyfield Setting - Infill Context
2 Acre Site (near Town Center)