



Street Rendering



First Floor

Second Floor

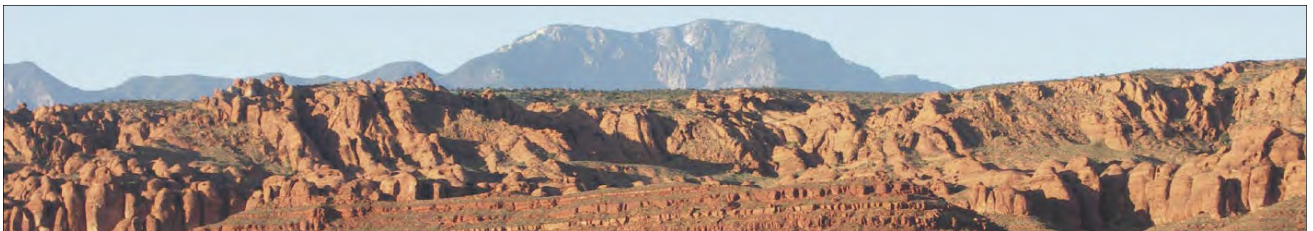
Third Floor



First Floor

Second Floor

Third Floor



## CRESCENT BLOCK

The north facing frontage along a curving street opens to views across lava fields toward a State Park. The program for interval ownership dictated three and four suite layouts, specifically oriented to the golf foursome as occupants. The units are courtyard types, with levels on both first and second floor open to the sky. The deep spaces of the interior courts provide shade from the summer sun.

## PROGRAM

*Avedea LLC/Split Rock*

- Six 3 Suite Units (Type 1)
- Seven 4 Suite Units (Type 2)

## HOUSES & HOUSING

*Village Setting - Neighborhood Context*  
1 Acre Site



Context Map

# P R O S P E C T   S T R E E T



East Elevation

## P R O S P E C T   S T R E E T   L O D G I N G

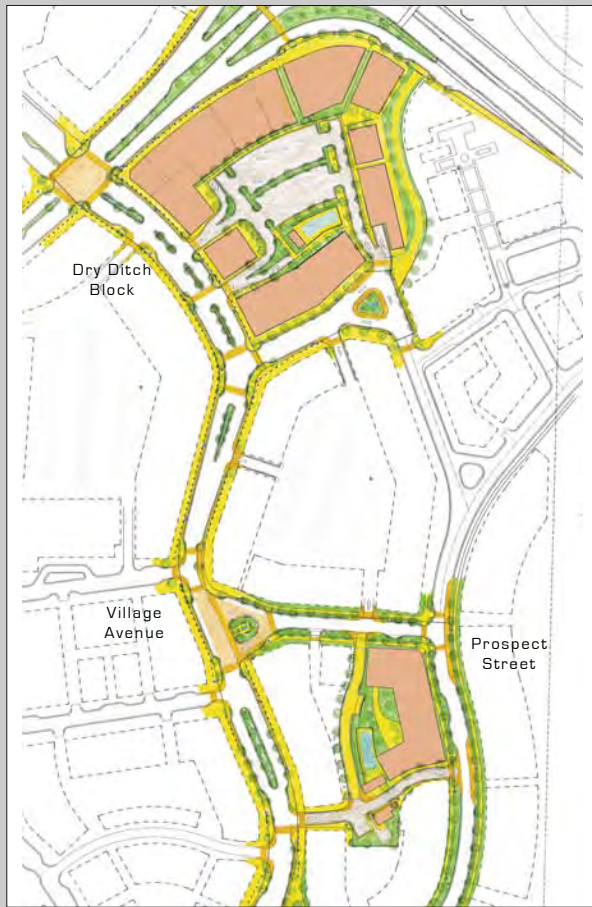
Ground floor masonry walls and upper floor pergolas provide the architectural identity within a surrounding landscape of red sand and black lava rock. Situated on a rise along the east edge of the Ivins Village, a limit of two stories was placed on the uphill (east) side of the twenty unit condominium, resulting in a three story court facing west to the interior of the block. Deep porches for each of the stacked flats screen the summer sun and provide for year around outside occupancy.



South Elevation



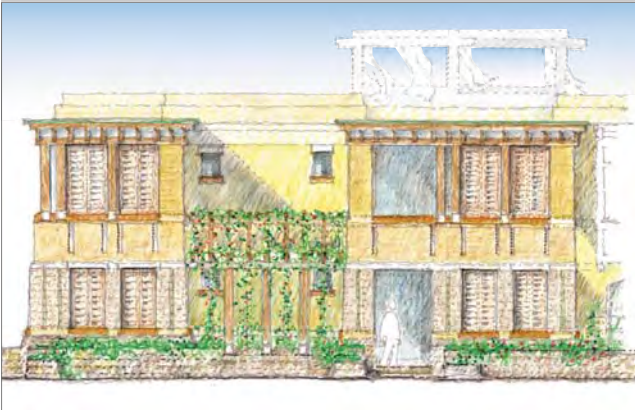
Site Plan



Context Plan



Sketch Rendering - South East View



East Elevation Study



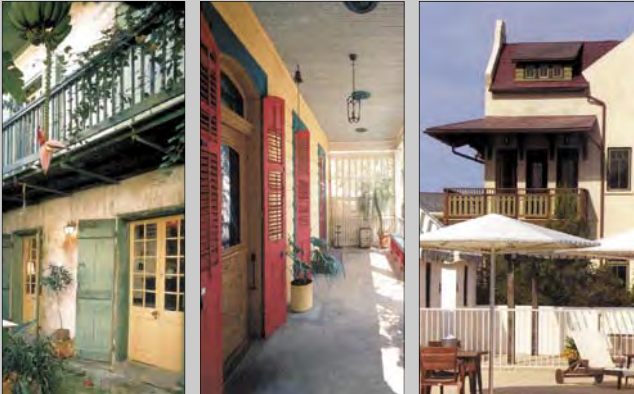
East Elevation Study

**PROSPECT STREET PROGRAM**

*Avedea LLC/Split Rock (with Rob McQuay Architects)*

- Eight 3 - Bedroom Units
- Twelve 1 - Bedroom Units
- Guest Reception Building
- Pool and Pool House

Porch Precedents



# DRY DITCH BLOCK



South Elevation Study



South Elevation Study

## DRY DITCH BLOCK

Situated at the south face of a mixed use block, a twenty unit structure of stacked flats with interval ownership is an appropriate use for a destination village setting. The building type is urban in character, holding the street edge with a continuous wall of deep porches and projecting window bays. The ground floor will employ stucco walls of exaggerated thickness, with lighter materials used on the upper floors.

## PROGRAM

*Avedea LLC/Split Rock*

- Eight 3 - Bedroom Units
- Twelve 1 - Bedroom Units
- Pool and Pool Structure
- Parking under Building



Context Plan

