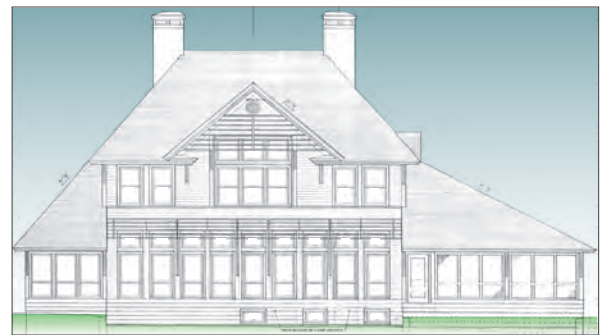




Photograph of Front Elevation

COMPLETED 1986

In response to local building traditions of southeastern Massachusetts, a house for a wooded large lot subdivision interprets 19th century precedents that were carefully integrated with their landscape settings. These structures were built with stone and wood, had steep roofs rising from a broad base of low eaves and large horizontal bands of windows, and were anchored by massive masonry chimneys. The residence has large rooms opening to the surrounding environment through a generous expanse of glass. The building's shingled skin moves easily to form the spaces inside - opening up to the south side, and becoming more solid toward the north.



Model and Elevation of Rear

PROGRAM

Primary House

- 3,300 Finished sf
- 4 Bedrooms
- 3.5 Baths
- 3 Car Garage
- Screened Porch

HOUSES & HOUSING

Lot Setting - Suburban Context

1 Acre Site

