

South West View

**DESIGN 2022**

At the high elevation of Ogden Valley, with its rural architectural tradition, surrounded on all sides by the Wasatch Mountains, this second home for a large family looks onto a creek flowing into the Huntsville reservoir. Two wings extend from the main volume to frame the approach and porte cochere facing south: the southwest wing houses the master suite - with views toward Snow Basin - and the southeast wing incorporates a childrens' bunk room over garage, locker room, and vehicle passage.

The 7,200 s.f. house unfolds to the west and north views of Ben Lomond and Nordic Valley, with broad porches and patios. The pool and hot tub terrace sits a half level between the main floor and creekside yard and field.

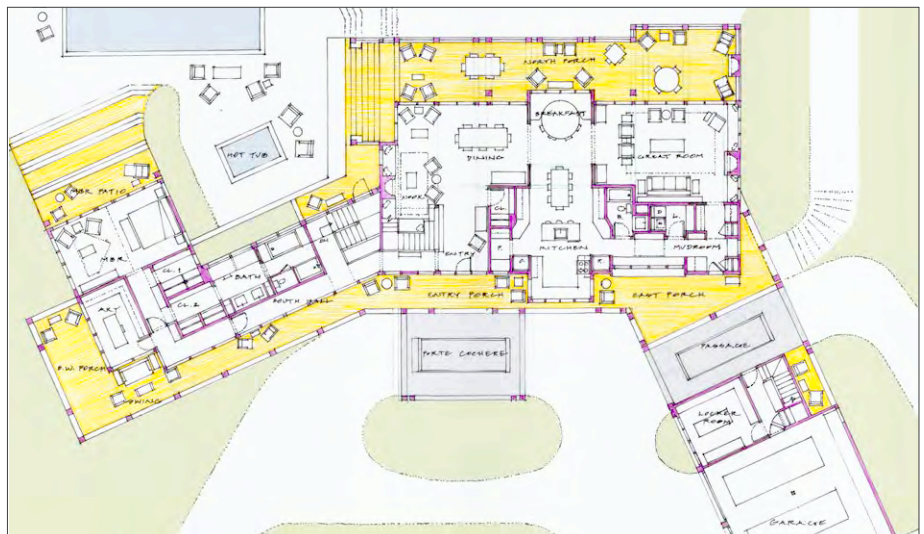


North West View

**PROGRAM**

Second Home

- 7,200 sf
- 8 Bedrooms
- 5 Baths
- Ground Floor Master Suite
- Formal and informal sitting
- Attached three car garage



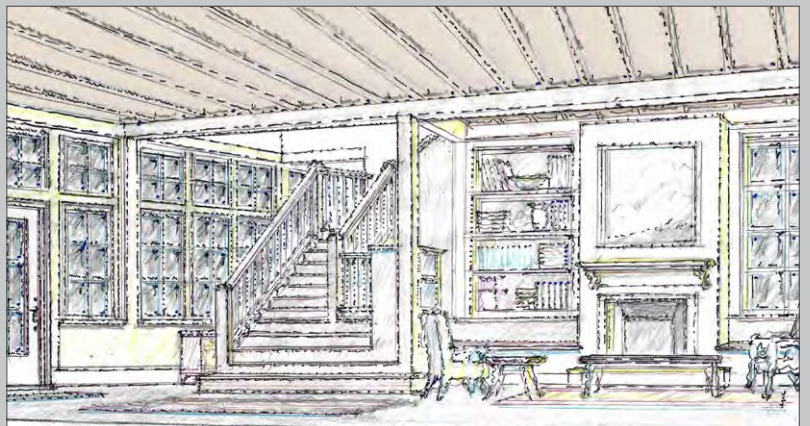
Main Floor Plan

**HOUSES & HOUSING**  
*Mountain Setting - Rural Context*  
 5 Acre Site

# PRIVATE RESIDENCE



North Elevation



Entry Hall



Site Plan



East Elevation



North-South Section