



Project Photograph

North East View

**COMPLETED 2006**

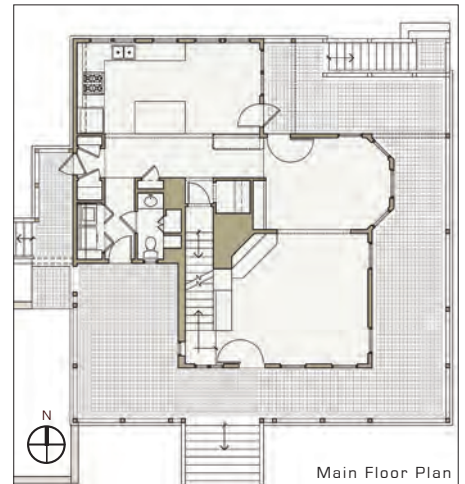
A moderate sized cottage was designed to replace a family beach home destroyed by fire. The style continues the gambrel and porch vernacular of the original house of 1911, reinterpreting the old plan and program for new generations. The porches on the first and second floor, coupled with high ceilings, offer relief from the sun and circulate breezes in the humid summer weather.

The seaside tradition of wood frame New England houses has informed the compositional technique and the details of painted trim and weathered shingles. The rooms open to water views with generous openings and bay windows.

**PROGRAM**

*Vacation Home*

- 2,400 sf
- 3 Bedrooms
- 3.5 baths
- Porches wrapped around three sides
- Second floor screened porch
- Kitchen with breakfast, Dining, Living Room
- Carport and Master Suite included in Phase Two



Main Floor Plan



East Porch looking towards Duxbury Bay

**HOUSES & HOUSING**  
*Shore Setting - Neighborhood Context*  
 1/2 Acre Site

# PRIVATE RESIDENCE



View to North East Porch



View from South East

The second phase of building for this cottage, creating a separate suite of rooms for the extended family, completes an enclosure around a raised earth platform [required by Massachusetts Health Code regulations for drainfields near the high tide line]. The lower volume reflects the New England lineage of "lean-to's and add-ons", which are clearly secondary to the main building form. The garage shall be located behind the stucco walls of the earth platform, underneath the one story bedroom wing.



View from Southwest - Phase II Sketch

Original House [constructed in 1911]

