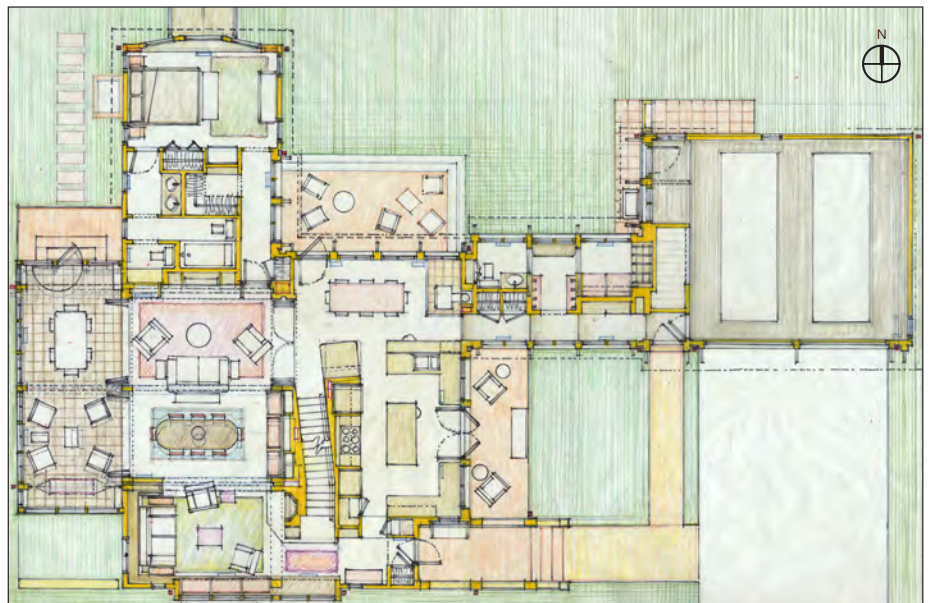


Street Rendering

South East View

DESIGN 2013

Situated along a private lane, a block removed from the shore, a cottage of moderate size has been prepared to replace a small cape on a secluded, wooded lot. The house front orients to the lane on the south, with the private rear yard facing north. In order to catch the morning sun, an entry court opens the kitchen to the southeast - for an eating deck - and a rear patio court opens the ground floor master suite to the northeast.



Main Floor Plan

PROGRAM

- Primary Residence*
- 2,800 sf
 - 4 Bedrooms, Study
 - 2.5 baths
 - Ground floor Master Suite
 - Formal and informal eating
 - Formal and informal sitting
 - Attached two car garage

HOUSES & HOUSING
Shore Setting - Neighborhood Context
 1/2 Acre Site

PRIVATE RESIDENCE

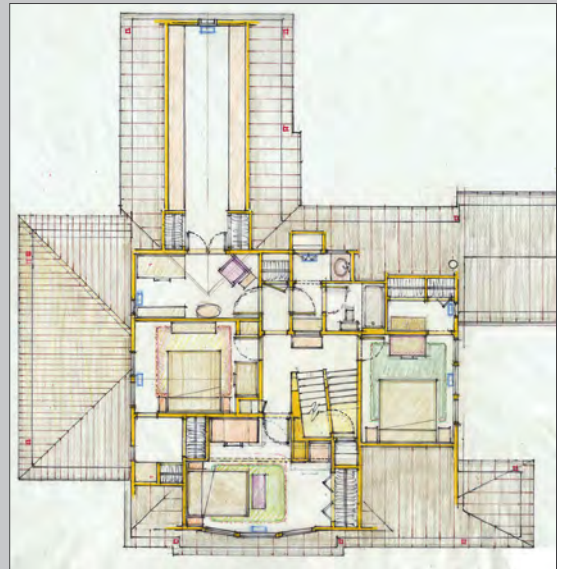
Entry Court / Southeast View

A sunroom is placed along the west side of the primary sitting and dining rooms, screening the interior from the afternoon summer sun. The glass walls of the sunroom open entirely to screens, and the interior glass doors open entirely to the sunroom, dramatically expanding the space of the ground floor in the warm weather.

All private rooms and utility elements of the ground floor are pulled to the interior of the plan, to free up the perimeter to continuous windows on all sides, flooding the interiors with light. Three modest bedrooms and a study comprise the upper floor, with less floor area than the ground level, producing the sheltering roofs of classic seashore cottages desired by the clients.



Southwest View



Upper Floor Plan



South Elevation