

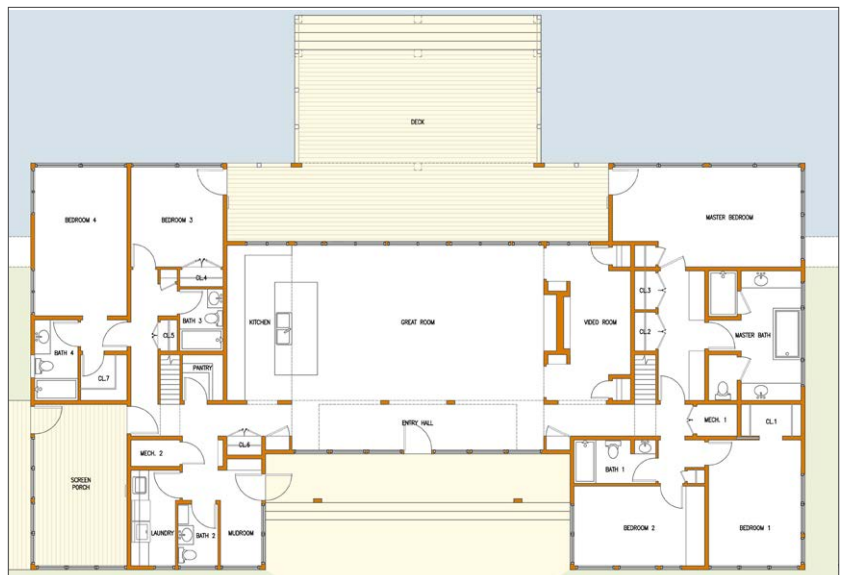


South West View

CONSTRUCTION 2022

A second home placed on the edge of a lake in Wyoming's Star Valley, with a great room at the heart of the plan, looking west through the broad porch toward lake and beyond – the Webster Range of eastern Idaho. The one story house employs low sheltering roofs; the attic level has just small playrooms looking onto the great room. Shed dormer windows bring morning and evening light to the interior central volume. Small bedrooms and a master suite are arrayed around the perimeter.

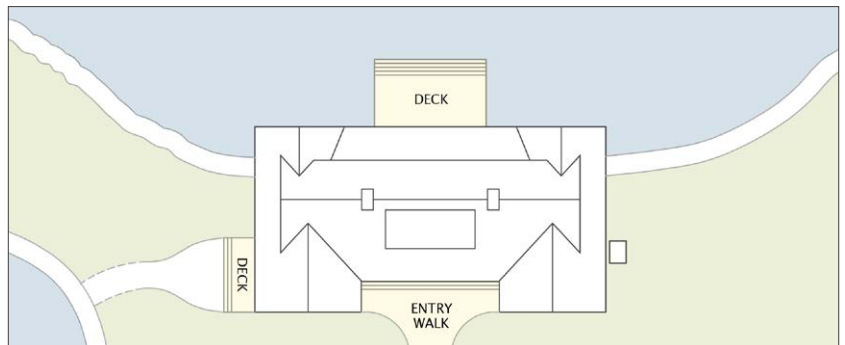
Window walls are generous, full height, and cleanly detailed – a minimal differentiation between the wide entry porch, the great room, west porch, and deck extending over the water. Deep eaves with exposed rafter tails sit above rough sawn vertical cedar siding meeting the fieldstone base.



Main Floor Plans

PROGRAM

- Second Home
- 3,300 sf
- 5 Bedrooms
- 6 Baths
- Central Great Room
- Porch & deck placed on lake
- Detached garage



Site Plan

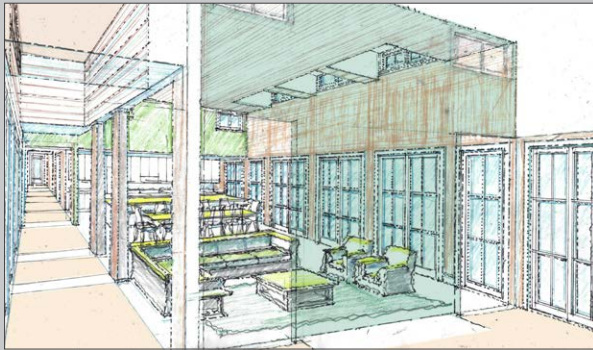
HOUSES & HOUSING
Mountain Setting - Rural Context
 20 Acre Site

PRIVATE RESIDENCE



North Elevation

Continuous glass opens great room and bedrooms to the broad deck, placed a few steps above the lake surface.



Entry Hall and Great Room



Side Elevation

The great room is lit from above along either side by shed dormers opening to the east and west.

Materials and colors stay within a simple palette, setting the structure into the subdued hues of the landscape - and yielding to the primacy of the water.



North East Elevation

All roofs come to a single story eave height in order to create a simple weekend home in a Wyoming valley.



North Elevation