

DESIGN & CONSTRUCTION 2021-23

A modest house of 1,300 s.f. and rear accessory cottage of 630 s.f. are expanded to shape an entrance courtyard with shaded car parking on the east side of the lot. To the west and south of the new master bedroom wing, a wood patio opens to the tree line and is situated for privacy between the screen porch and bedroom.

The modest scale of the existing structures dictated a sequence of small discrete volumes of vernacular character, and the attenuated plan shapes several exterior spaces. The 16 foot square garden studio shed to the rear sets up a garden court off the north end of the bedroom and defines the west edge of the accessory cottage patio.



PROGRAM

Primary Residence

- 800 sf Entry and Bedroom Wing
- 220 sf Screen Porch
- 200 sf Garden Shed
- Master Bedroom Suite and Deck
- New Entry Hall and Closet
- Extended Dining Area and Pantry
- Screen Porch facing south and west
- Patio stepping down to lawn



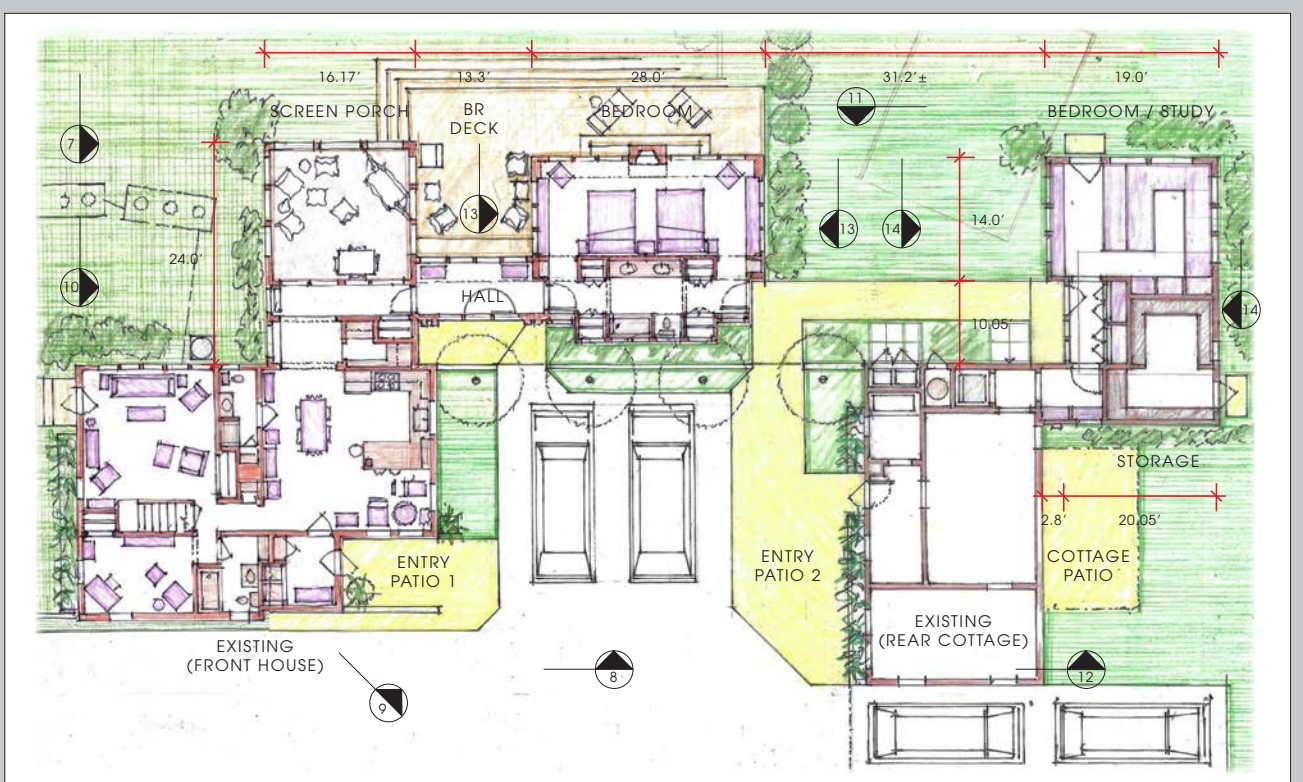
Southwest Elevation

HOUSE & HOUSING

Neighborhood Context

40,000 SF Site

CHESTNUT ST. RESIDENCE



Ground Floor Plan



East View



West Elevation

CHESTNUT ST. RESIDENCE



Master Bathroom



Master Bedroom



Deck between Bedroom and Porch



Screen Porch

Clerestory windows above the bathroom provide morning light from the east into the west facing bedroom.

Discrete volumes of the porch, bedroom wing, and garden studio shed define decks and courtyards around the house and rear cottage, weaving interior spaces with the outside.



Southwest Elevation