



View along Hillside

**DESIGN 2022**

A second home sits astride a promontory along a high ridge above a mountain valley, at the Idaho Wyoming border, capturing panoramic views to all sides. With prevailing winds from the east, the plan is organized in a line of rooms to create a protected courtyard facing south, and facing the long arrival drive from the river bottoms.



North Elevation

To connect the house form to the muscular, spare landscape - steep roofs are the dominant attribute in continuing the hillside profile, coming down to one story eaves, as close as possible to the ground. The linear plan opens all rooms to views and direct contact with the exposed headland, allowing for intimate experience of weather conditions adverse or benign through all seasons. The garage is located on a lower level, to avoid any interruption to the 360 degree prospect.



Entry View

Gable and shed dormers are placed along the long roof volume to light the children's bunk room, play room, and study. On the west end of the house, the great room and dining room have exposures to all directions.



Site Plan

**PROGRAM**

- Second Home
- 5,200 sf
- 5 Bedrooms & Bunk Room
- 6 Bathrooms
- 3 Living Levels
- 2 Car Garage - Lower Floor
- Screen Porch & Entry Arcade

**HOUSES & HOUSING**

*Mountain Setting - Rural Context*  
100 Acre Site

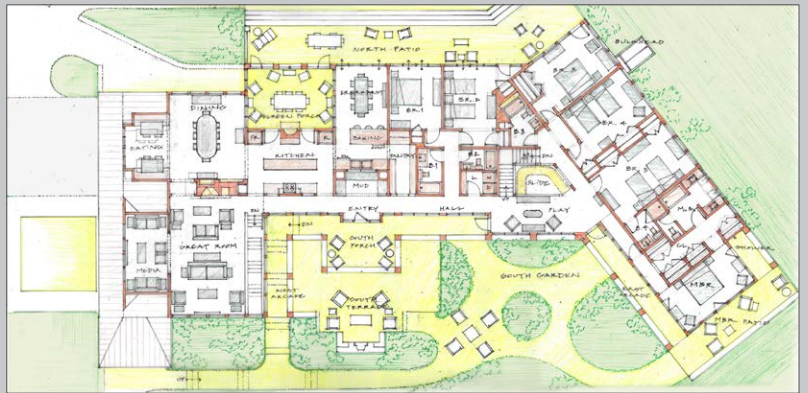
# PRIVATE RESIDENCE



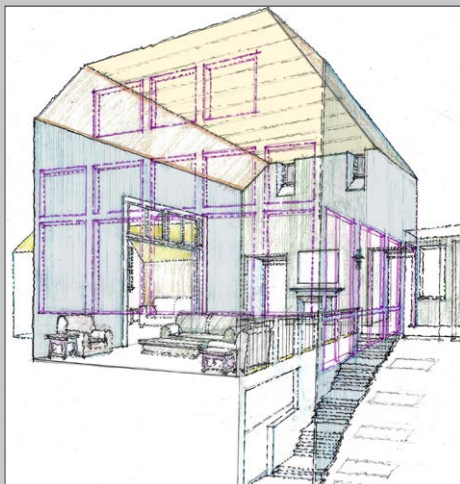
South West View



West Elevation



Main Floor Plan



Great Room



South Elevation